

MOTION NO. 5767

1
2 A MOTION authorizing the King County
3 Executive to enter into an agreement
4 with the City of Bellevue regarding
5 Surface Water Planning and
6 Development Controls in the Coal
7 Creek Drainage Basin.

8 WHEREAS, the Coal Creek drainage basin (as described in
9 Exhibit A and hereinafter referred to as "the Basin") has
10 surface water flooding, erosion and sedimentation, and water
11 quality problems, and

12 WHEREAS, the parties hereto recognize the desirability of
13 additional measures by both agencies in order to minimize or
14 reduce those adverse effects, and

15 WHEREAS, King County has enacted Ordinance Nos. 2281, 2812,
16 4938, 5824, and 5940; and Bellevue has enacted Ordinance Nos.
17 2003, 2799 and 2645 and Resolution No. 3706 in an effort to
18 minimize flooding and consequent erosion and siltation arising
19 from building and land development within the Basin, and

20 WHEREAS, Bellevue has established a Storm and Surface Water
21 Utility capable of financing surface water improvements and
22 King County is currently assessing the feasibility of
23 establishing such a utility, and

24 WHEREAS, RIBCO recommended that King County coordinate
25 urban drainage solutions and the County is developing the
26 planning and management capabilities to facilitate that
27 coordination, and

28 WHEREAS, King County has adopted by Ordinance 6422 a
29 comprehensive land use and community development plan known as
30 the Newcastle Communities Plan for an area which encompasses
31 the Coal Creek Basin, and
32
33

1 WHEREAS, Bellevue has prepared and adopted a comprehensive
2 land use plan known as the Factoria Sub-Area Plan for an area
3 which encompasses portions of the Coal Creek Basin, and

4 WHEREAS, a seven member citizen study group will be jointly
5 appointed by King County and Bellevue to assist the staff
6 project management team during the development of the Coal
7 Creek Basin Plan, and

8 WHEREAS, each jurisdiction will appoint three members, and
9 these six members will select a seventh member as chairperson,
10 and

11 WHEREAS, the County Council will nominate two persons from
12 each of the Council Districts numbered 3, 6, and 9, and

13 WHEREAS, the County Executive will appoint from the list of
14 nominees one from each of the Council Districts numbered 3, 6,
15 and 9 to be confirmed by the County Council, and

16 WHEREAS, King County and Bellevue are both committed to
17 seeking solutions to drainage problems in the Coal Creek Basin,
18 the nature and extent of those problems to be determined by a
19 planning effort;

20 NOW, THEREFORE, BE IT MOVED by the Council of King County:

21 The King County Executive is authorized to enter into an
22 agreement in substantially the same form as attached hereto and
23 between KING COUNTY and THE CITY OF BELLEVUE.

24 PASSED this 20th day of June, 1983.

25 KING COUNTY COUNCIL
26 KING COUNTY, WASHINGTON

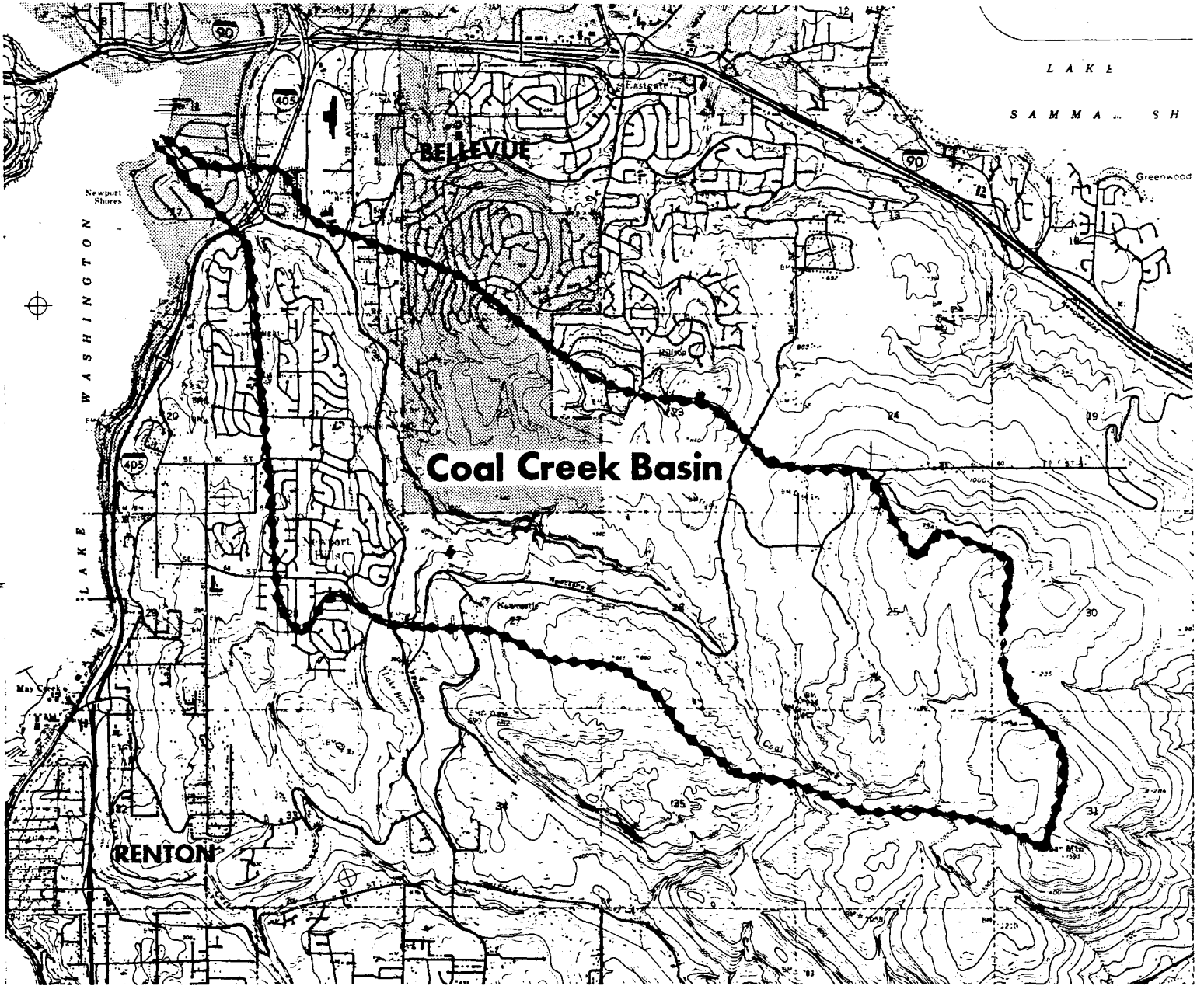
27
28
29 Chairman

30 ATTEST:

31
32
33 Clerk of the Council

EXHIBIT A

The Coal Creek Drainage Basin, as drawn on this page from the best available sources, which may be modified due to refinements made during the Coal Creek Basin Plan.



COAL CREEK BASIN PLAN

King County, Bellevue and Metro Roles

Task 1- Study Objective King County and Bellevue will jointly agree on the objectives of the basin study. Included in this agreement will be the nature of problems to be addressed, the area of study, and the level of detail of the final product.

Task 2- Hire Consultant King County and Bellevue will develop a scope of work for a consultant contract dealing with analyses of erosion, sedimentation, delta formation, habitat improvement, and computer simulation. Both agencies will participate in the Consultant selection process. Bellevue will process the contract for the selected Consultant and process contract payments based upon approvals of invoices by King County and Bellevue.

Task 3- Modelling Objectives King County and Bellevue will jointly agree on the modelling objectives. Included in this agreement will be the choice of simulation models, the needed level of accuracy, a calibration process and data needs. The consultant will assist.

Task 4- Stream and Rainfall Data Bellevue and METRO will coordinate and implement a program of stream gauging, rainfall gauging and water quality analysis based upon data needs established by the Consultant, King County and Bellevue. The rainfall/streamflow data will be incorporated into the stream model calibration. Water quality data, especially

the analysis of settleable solids, will contribute to the delta problem analysis, Task 9, as well as the habitat analysis, Task 8.

Task 5- Collect Data Using land use data on file in the Planning Division and in the City of Bellevue, the County Planning Division will collect all necessary data related to existing land use for the chosen model. The Planning Division and the City of Bellevue, with assistance from Surface Water Management, will collect all time series and basin data needed by the chosen model. The consultant will supervise.

Task 6- Community Involvement Program Bellevue and the County Planning Division will jointly design and conduct a community information/involvement program targeted at residents and landowners in the study area. Included in this program could be informational brochures, community meetings and several stream awareness projects. An advisory committee will be formed to make suggestions and review study products and will be staffed by the management team of Bellevue and King County.

Task 7- Code Data Based on the modelling strategy and under the supervision of the consultant, the County Planning Division will code all necessary data for computer simulation on the County computer. All coordination with County System Services will be through the Planning Division.

Task 8- Habitat Analysis Bellevue, with assistance from METRO, will collect and provide data to the consultant to establish baseline, in-stream habitat conditions.

Task 9- Erosion and Delta Analysis King County and Bellevue will both supervise the consultant analysis of the erosion and sedimentation processes in Coal Creek. As much as the effort can be reasonably divided, Bellevue will lead the delta investigation while the County, especially the Surface Water Management Division, will lead the erosion analysis.

Task 10- Model Calibration Under the supervision of the consultant, the County Planning Division will calibrate the model to the selected level of accuracy. Surface Water Management and Bellevue will review and approve the resulting work.

Task 11- Economic Analysis Using the LDIS and agency projections, the County Planning Division will prepare a development trends analysis for the study area. Using census and assessors data, the County Planning Division will prepare an economic profile of the unincorporated portion of the study area to determine the feasibility of funding the County portion of the basin plan improvements from the basin.

Tasks 12 and 14- Problems Analysis Under the supervision of the consultant, the County Planning Division will perform the problem analysis using the model, existing land use data and selected future land uses. Modelled information will be added to the results of the erosion, delta, and habitat analyses to complete the problem identification. Surface Water Management and Bellevue will actively participate in the synthesis and review of the resulting information. The advisory committee will also review and comment on the resulting analysis.

Task 13- Identify Future Land Use King County and Bellevue will jointly agree upon the future land use scenario(s) to be modelled. These agencies will draw upon approved comprehensive plans such as the Newcastle Community Plan (if adopted) and the Factoria Sub-Area Study. The necessary data for each scenario will be generated for the chosen model by King County.

Task 16- Identify Solutions All study participants including the advisory committee will work jointly to identify and develop alternative solutions to the identified problems including the erosion and delta problems.

Task 17- Alternative Selection Under the supervision of the consultants, the County Planning Division will test the selected solutions using the calibrated model. The modelled results will be evaluated in terms of effectiveness as well as costs. The criteria to be used in the analysis will be agreed upon by all study participants. The consultant will then select the best alternative. The County Planning Division, Surface Water Management, Bellevue and the advisory committee will jointly review the consultants recommended alternative. This alternative will include the total package of solutions covering erosion, delta formation, flooding, in-stream habitat restoration and other identified stream related problems. Both agencies must concur on the selected alternative.

Task 18- Public Meetings The County and Bellevue will jointly sponsor public meetings to inform interested citizens about the selected alternative and to receive comments on the study conclusions.

Task 19- Document and Publish Plan King County will produce and publish the plan and supporting documents with some technical assistance from Bellevue. The printing costs will be shared by both agencies.

Task 20- Publish the Draft and Final Environmental Impact Assessment/Statement King County, in its role as the nominal lead agency for SEPA purposes will produce and publish the necessary documents for SEPA review. Printing costs will be shared by both agencies.

COAL CREEK BASIN PLAN

Consultant Role

Task 3 - Modeling Strategy. Given a short written statement of the study's goals from King County and Bellevue, the consultant will present a modeling strategy which recommends a model which will best help answer the questions likely to arise in the study. The strategy should specify:

- a) a model and recommended degree of modeling detail (appropriate number of modeled drainage areas and stream reaches, appropriate number and location of rain and flow gages, etc.) which will help evaluate and contrast expected planning alternatives,
- b) the desired length of rainfall records and their actual availability,
- c) five to ten pages specifying the accuracy necessary for the physical stream survey (Task 5, below),
- d) an estimate of the number of modeling simulations necessary and their projected costs to run on the King County computer system, and
- e) a process for calibrating the chosen model.

Task 5 - Physical Stream Survey. Following review of the specifications for this task by Bellevue and King County, the consultant will collect appropriate physical and hydrologic basin data for

computer coding by King County. The consultant shall assist King County in securing historical rain data from appropriate agencies. The consultant shall synthesize rainfall time series data necessary for first calibrating the model and then using it to evaluate present and future problems and their proposed solutions.

Task 8 - Habitat Analysis. The consultant will assess Coal Creek for its value as habitat for wildlife (especially salmon and trout) and the present and likely future threats to this habitat. This assessment will also include an evaluation of the delta habitat under possible alternatives including birds and shore fish.

Task 9 - Erosion and Delta Analysis. The consultant shall assess the problem of delta formation at the mouth of Coal Creek and the sources of erosion throughout the basin. The analysis should include at a minimum:

- a) rates of transport of sediment through the basin,
- b) patterns in the delta's accretion,
- c) promising solutions to control and/or rehabilitate the erosion/sedimentation problems, and
- d) alternative solutions to the delta problem.

Task 10 - Model Calibration. With King County support for making all necessary computer coding and runs, the consultant will calibrate the model for Coal Creek. The consultant will prepare a detailed assessment of the calibration, including statistical analysis

of the "closeness of fit" of the model's projections to measured data. No further modeling work is authorized until Bellevue and King County have reviewed and approved the calibration assessment.

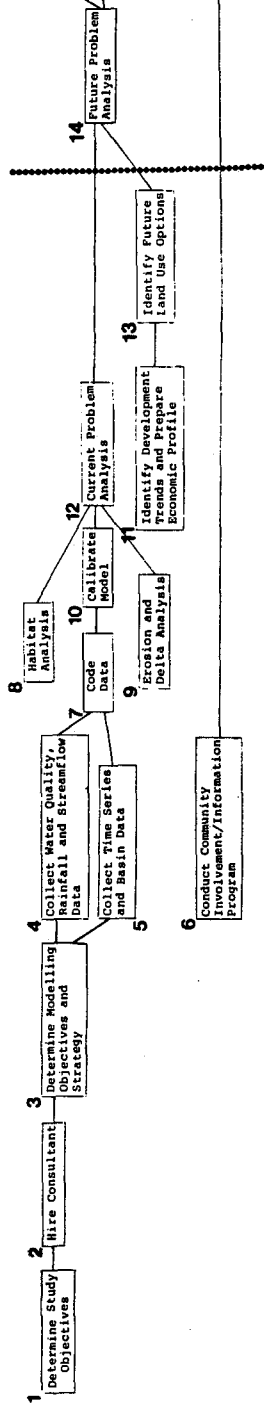
Tasks 12, 14 and 16 - Stream Problems Analysis. The consultant will provide "over-the-shoulder" advice to King County staff in their modelling and analysis of the stream's present problems, potential future problems and alternative solutions.

Task 15 - Habitat Restoration Plan. The consultant will prepare a restoration plan for high value habitats identified in Task 8.

Task 17 - Evaluate and Select Best Alternative. The consultant will supervise the model evaluation of the proposed alternatives. Using criteria agreed upon by all study participants, the Consultant shall select the best alternative.

Coal Creek Basin Plan

1983



TASK #	king county planning			king county public works			KCTOTAL	BISNE
	TRACY	MESBIT	ECKEL HELLER DOLLARS	GIBBONS	WOOD LEVESOU DOLLARS	KCTOTAL		
TASK 1	.5	.5	.5	.25	1983			
TASK 2	.25	.25	.75	.25	some			
TASK 3	0	.25	.25	.25	some			
TASK 4	0	0						
TASK 5			1		.25			
TASK 6	.25		1.25					
TASK 7	.25		.25		.75			
TASK 8			.25		0			
TASK 9	.25		.25		.25			
TASK 10		1	.75		1.5			1500
TASK 11			.25		.25			
TASK 12	0	.5	.25		.25			
TASK 13			.25		.25			
1983STAF	1	3	6	.5	1.5			19.75
RATE/MON	4120	3344	3423	4120	3840			4660
1983TOTL	4120	10032	20530	2060	5760			64982
TASK 14		.75	.25		.25			
TASK 15			.25		.25			
TASK 16		.25	.25		.25			
TASK 17	.25	.75	.75	.25	.5			.25
TASK 6			2		1			
TASK 18	.25		.5		.25			
TASK 19		.5	1		1			
TASK 20		.25	.75		1			
1984STAF	.5	2.5	5.75	.5	1.25			14.5
RATE/MON	4120	3344	3423	4120	3840			4660
1984TOTL	2060	8360	19682.25	2060	4800			55182.25
PROJTOTL5	6180	18592	40220.25	4120	10560			120164.3